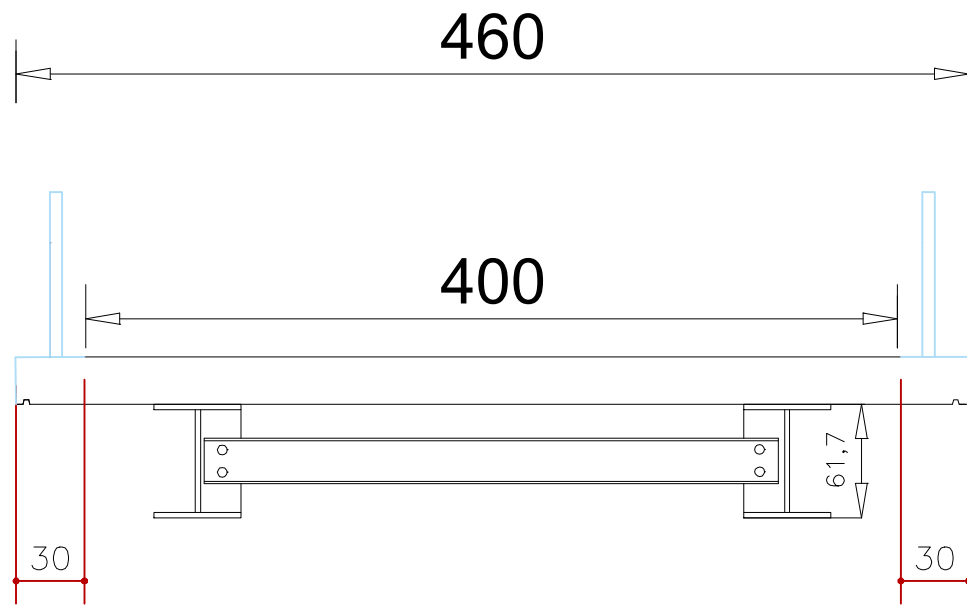
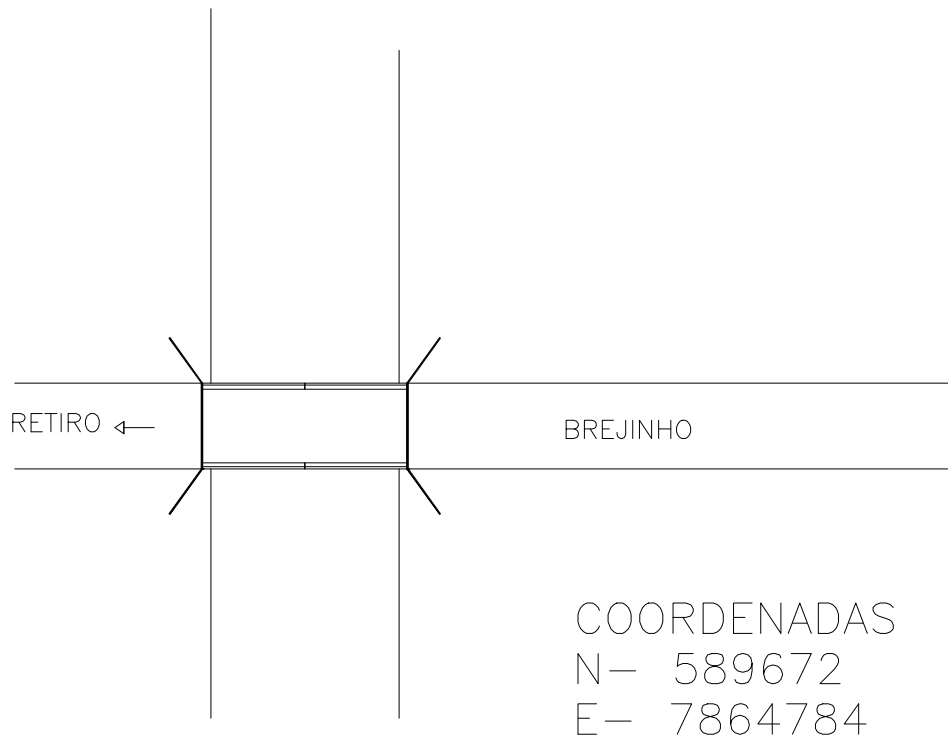
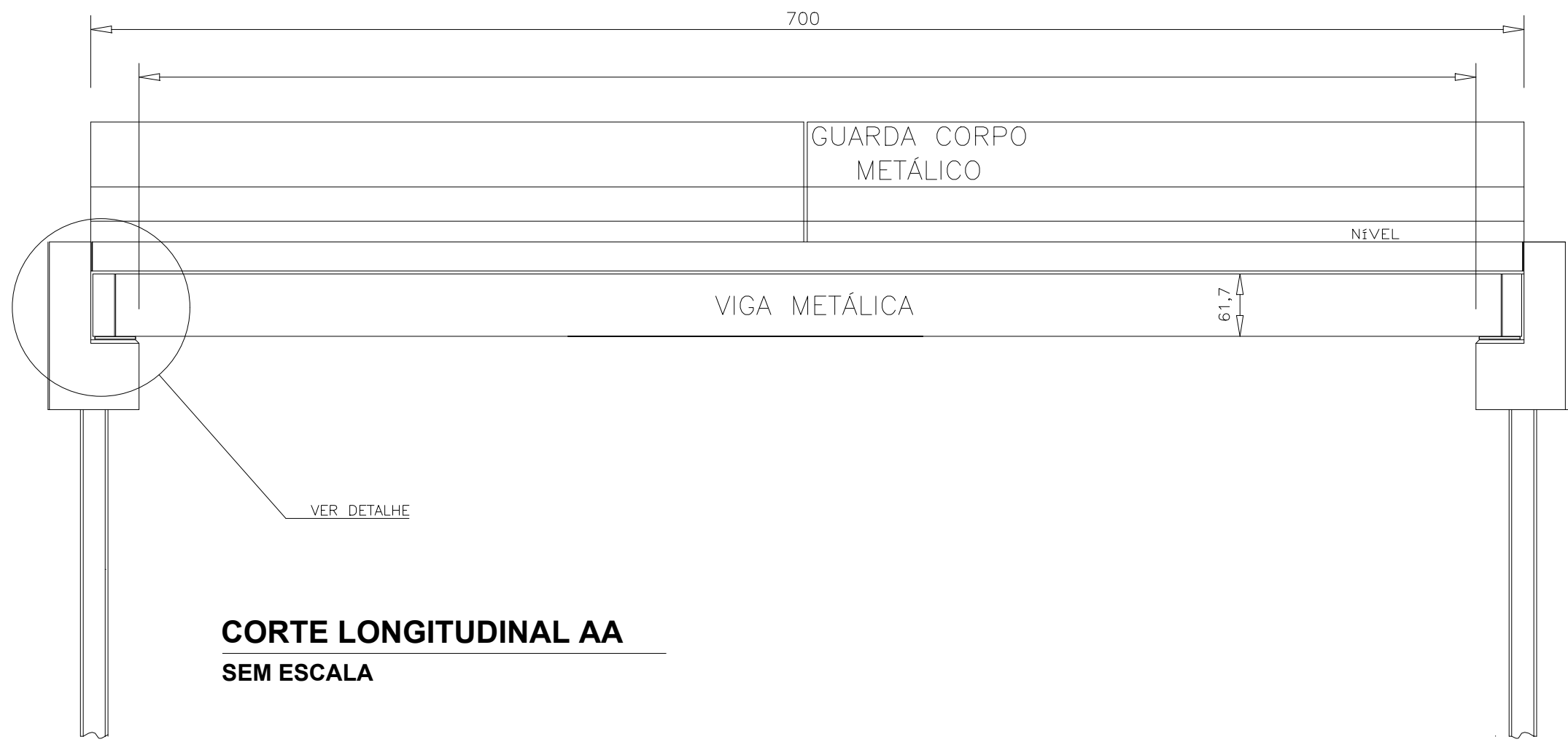
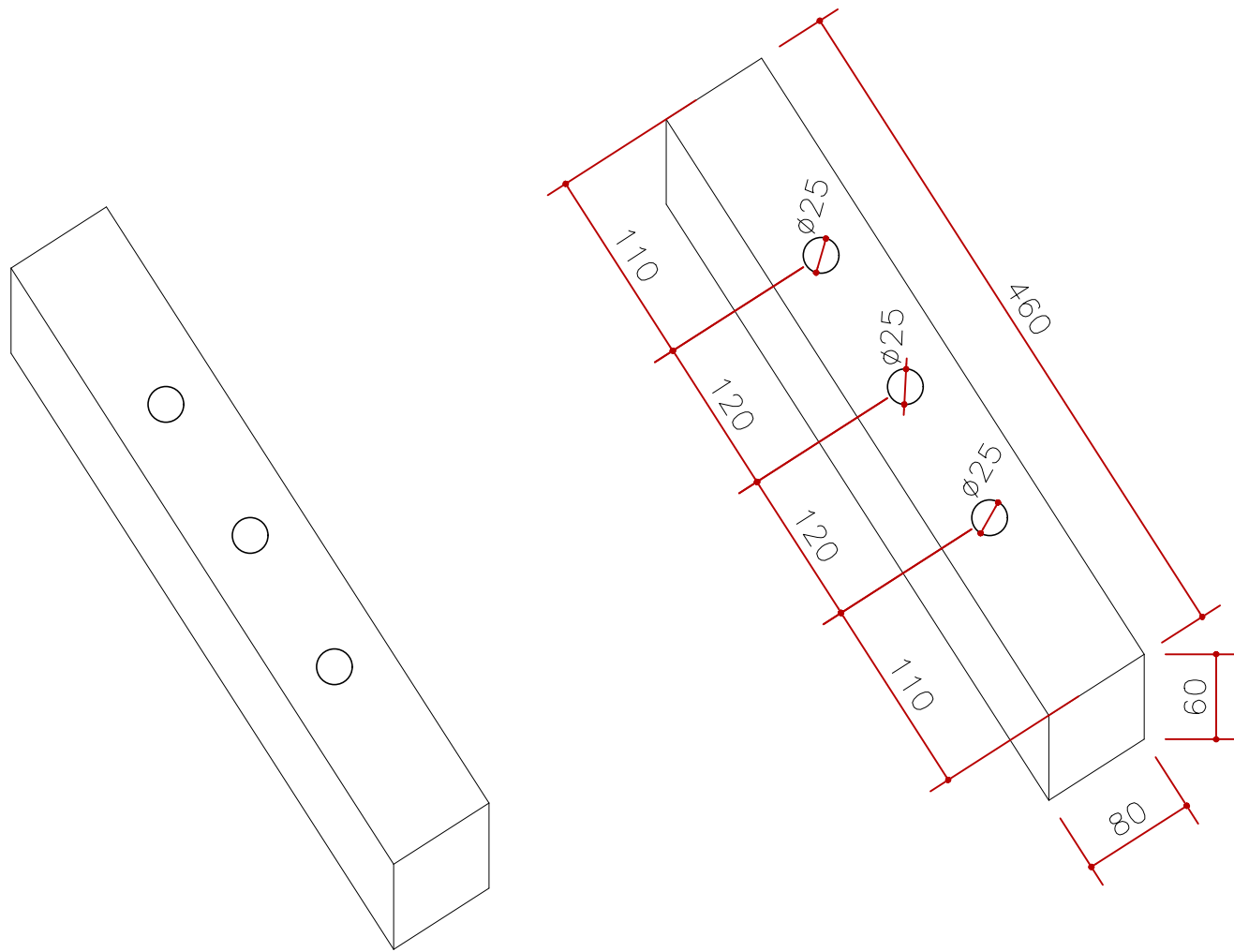
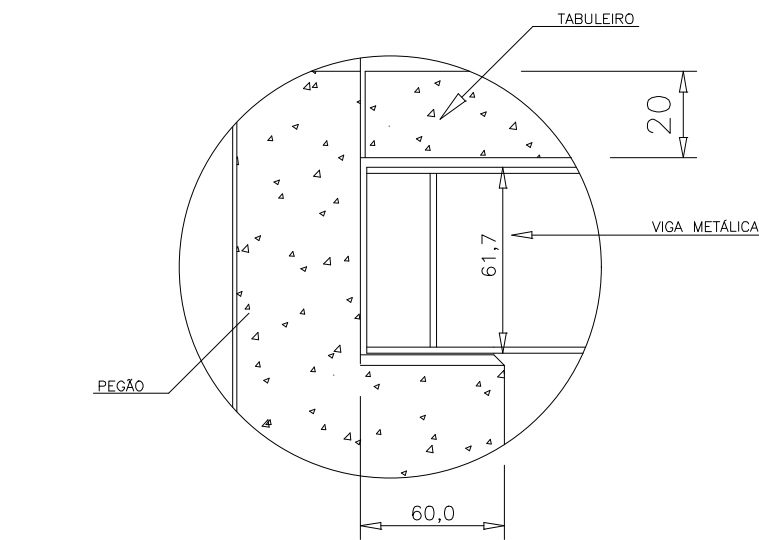
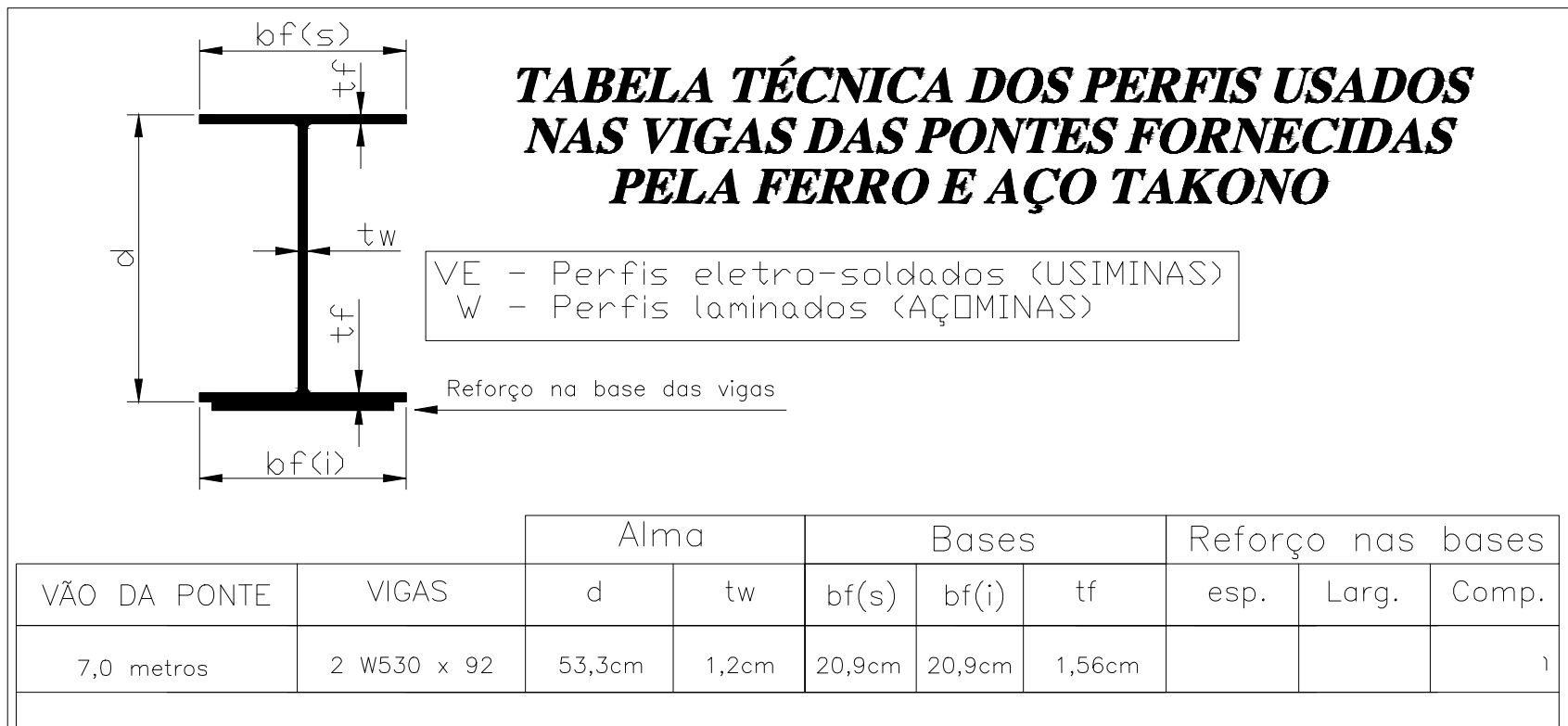
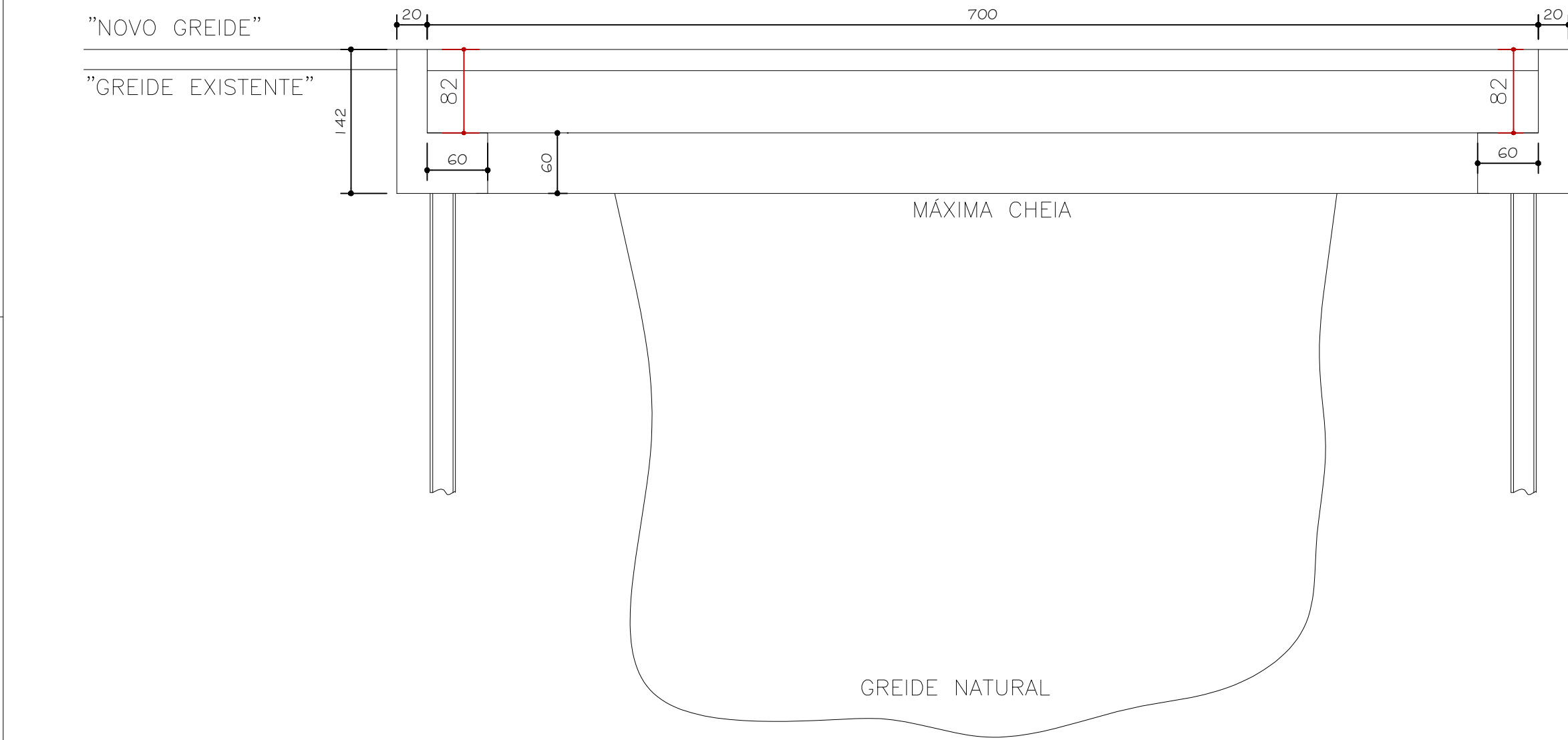
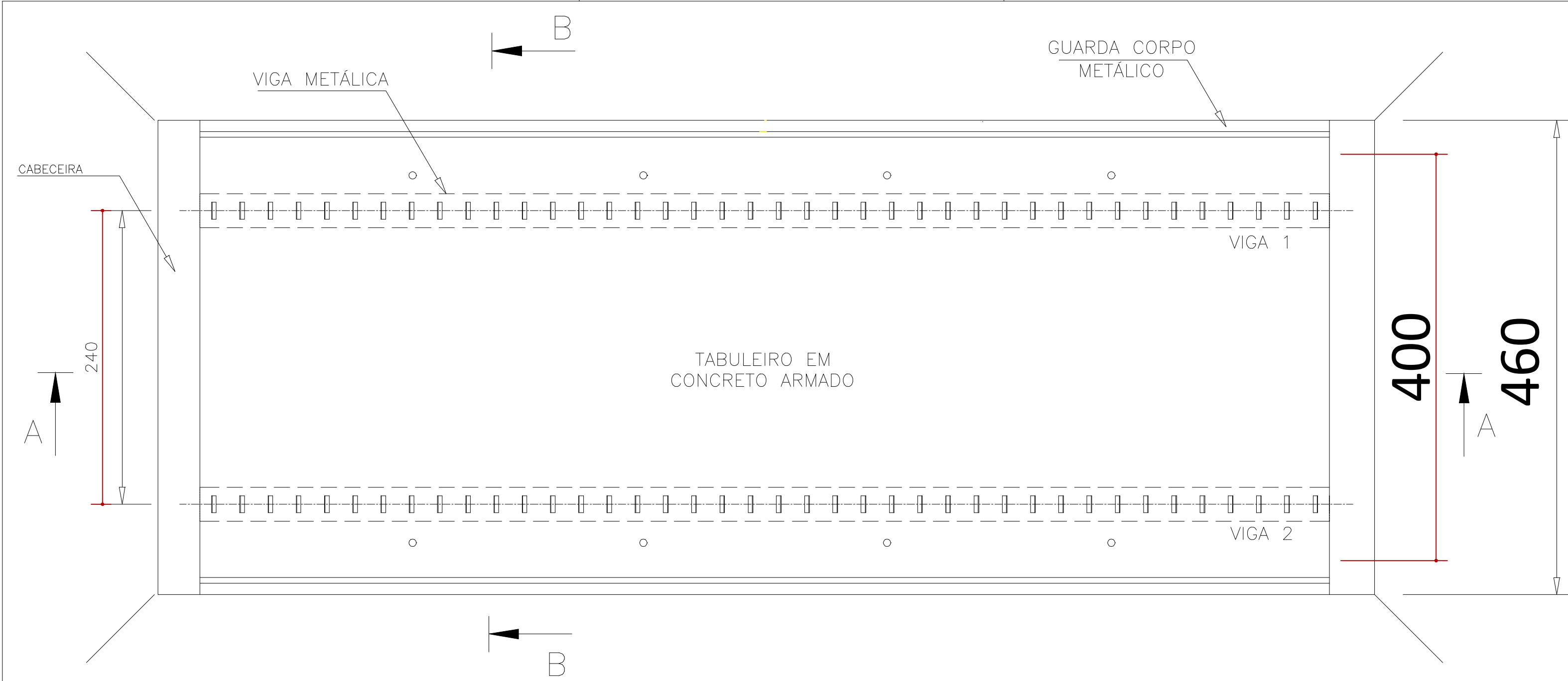


PRODUCED BY AN AUTODESK STUDENT VERSION



PREFEITURA MUNICIPAL DE JEQUITIBÁ SECRETARIA MUNICIPAL DE OBRAS PÚBLICAS		
TÍTULO: PROJETO CIVIL - PONTE		
PROPRIETÁRIO: PREFEITURA MUNICIPAL DE JEQUITIBÁ	ESCALA: 1/500	
LOCAL: ESTRADA VICINAL - COM. RURAL BREJINHO	MUNICÍPIO: JEQUITIBÁ / MG	
LEVANTAMENTO: LUIS GUSTAVO	DESENHO: LUIS GUSTAVO	
R.T:	FOLHA: ÚNICA	DATA: MARÇO/2020

PRODUCED BY AN AUTODESK STUDENT VERSION